

CD55 Antibody (aa71-330)
Rabbit Polyclonal Antibody
Catalog # ALS16359**Specification**

CD55 Antibody (aa71-330) - Product Information

Application	WB, IHC-P, ICC
Primary Accession	P08174
Reactivity	Human
Host	Rabbit
Clonality	Polyclonal
Calculated MW	41kDa KDa
Dilution	WB~~1:1000 IHC-P~~N/A ICC~~N/A

CD55 Antibody (aa71-330) - Additional Information**Gene ID** 1604**Other Names**

Complement decay-accelerating factor, CD55, CD55, CR, DAF

Target/Specificity

Human CD55

Reconstitution & Storage

Keep as concentrated solution. Aliquot and store at -20°C or below. Avoid multiple freeze-thaw cycles.

Precautions

CD55 Antibody (aa71-330) is for research use only and not for use in diagnostic or therapeutic procedures.

CD55 Antibody (aa71-330) - Protein Information**Name** CD55**Synonyms** CR, DAF**Function**

This protein recognizes C4b and C3b fragments that condense with cell-surface hydroxyl or amino groups when nascent C4b and C3b are locally generated during C4 and c3 activation. Interaction of daf with cell-associated C4b and C3b polypeptides interferes with their ability to catalyze the conversion of C2 and factor B to enzymatically active C2a and Bb and thereby prevents the formation of C4b2a and C3bBb, the amplification convertases of the complement cascade (PubMed:7525274). Inhibits complement activation by destabilizing and preventing the formation of C3 and C5

convertases, which prevents complement damage (PubMed:28657829).

Cellular Location

[Isoform 1]: Cell membrane; Single-pass type I membrane protein [Isoform 3]: Secreted [Isoform 5]: Secreted [Isoform 7]: Cell membrane; Lipid-anchor, GPI-anchor

Tissue Location

Expressed on the plasma membranes of all cell types that are in intimate contact with plasma complement proteins. It is also found on the surfaces of epithelial cells lining extracellular compartments, and variants of the molecule are present in body fluids and in extracellular matrix

Volume

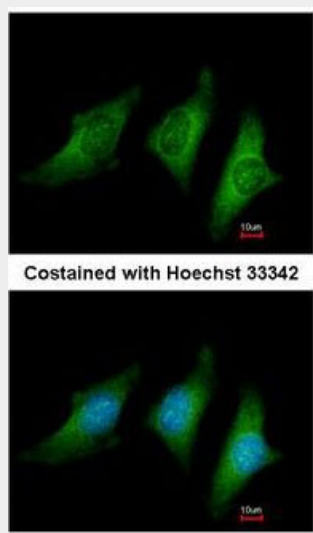
50 µl

CD55 Antibody (aa71-330) - Protocols

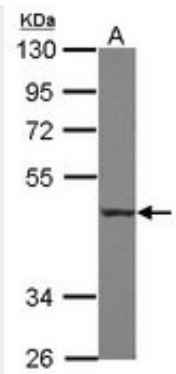
Provided below are standard protocols that you may find useful for product applications.

- [Western Blot](#)
- [Blocking Peptides](#)
- [Dot Blot](#)
- [Immunohistochemistry](#)
- [Immunofluorescence](#)
- [Immunoprecipitation](#)
- [Flow Cytometry](#)
- [Cell Culture](#)

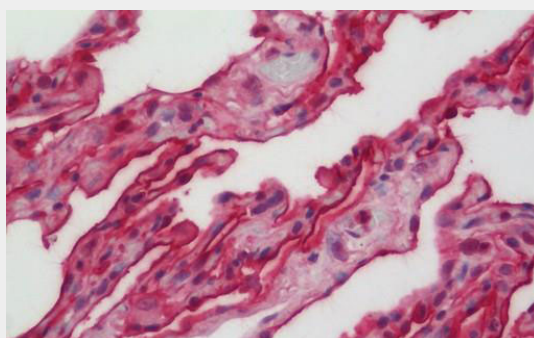
CD55 Antibody (aa71-330) - Images



Immunofluorescence of methanol-fixed HeLa using CD55 antibody at 1:200 dilution.



Sample (30 ug of whole cell lysate). A: THP-1. 10% SDS PAGE. CD55 antibody diluted at 1:1000.



Human Lung: Formalin-Fixed, Paraffin-Embedded (FFPE)

CD55 Antibody (aa71-330) - Background

This protein recognizes C4b and C3b fragments that condense with cell-surface hydroxyl or amino groups when nascent C4b and C3b are locally generated during C4 and c3 activation. Interaction of daf with cell-associated C4b and C3b polypeptides interferes with their ability to catalyze the conversion of C2 and factor B to enzymatically active C2a and Bb and thereby prevents the formation of C4b2a and C3bBb, the amplification convertases of the complement cascade.

CD55 Antibody (aa71-330) - References

Caras I.W.,et al.Nature 325:545-549(1987).
Osuka F.,et al.Genomics 88:316-322(2006).
Kalnine N.,et al.Submitted (MAY-2003) to the EMBL/GenBank/DDBJ databases.
Gregory S.G.,et al.Nature 441:315-321(2006).
Mural R.J.,et al.Submitted (SEP-2005) to the EMBL/GenBank/DDBJ databases.